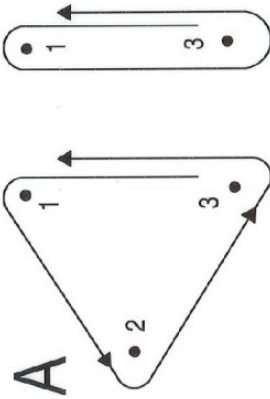
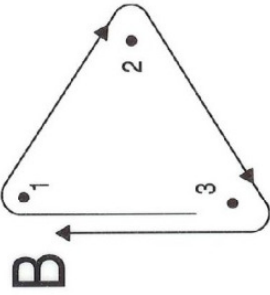


ITCHENOR SC, SAILING INSTRUCTIONS COURSE CARD BETA (β), DIAGRAM COURSES

- β 1 This appendix applies when the first code of the course is symbol β .
- β 2 The marks of the course will be ISC orange pillar inflatable marks.
- β 3 The course configuration and the order of rounding marks will be as shown in the diagrams overleaf.
- β 4 The course as drawn may be distorted to fit within the physical limitations of the harbour or to allow better sailing legs.
- β 5 The course to be sailed will be displayed in the following order:
- β 5.1 Symbol β .
 - β 5.2 Letter indicating the type of course to be sailed, as shown in the corresponding diagram.
 - β 5.3 Numeral indicating the number of rounds to be sailed.
 - β 5.4 In addition, one or more of the following symbols may be displayed:
 - (a) Spreader mark symbol \longleftrightarrow . When this symbol is displayed, a spreader mark adjacent to mark 1 shall be rounded on the same side as mark 1 after rounding mark 1.
 - (b) Middle gate symbol \times . When this symbol is displayed, pass through the gate between the Committee Vessel and the nearby mark after rounding the last mark on each round. If the Committee Vessel is not on station, it will be replaced by a mark.
 - (c) Outside gate symbol \blacklozenge . When this symbol is displayed, pass outside the middle gate defined in β 5.4(b) above at all times, unless required to pass through this gate.
- β 6 Finishing Line
- β 6.1 If a Middle Gate is set as β 5.4(b), finish at that gate when completing the last round of the course.
 - β 6.2 Otherwise finish between a staff displaying a blue flag on a Committee Vessel and mark 1 of the course (normally the windward mark) after completing the last round of the course.

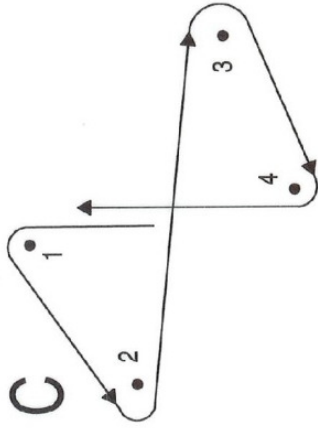


First and subsequent odd rounds

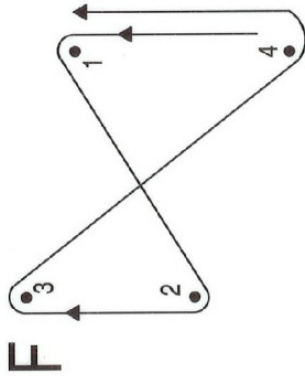
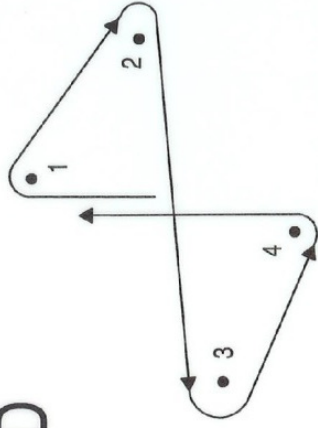


First and subsequent odd rounds

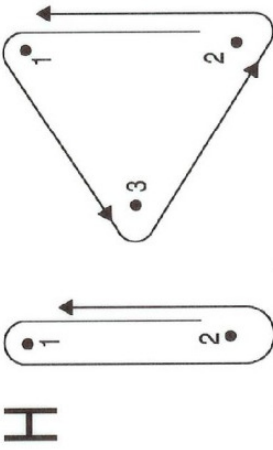
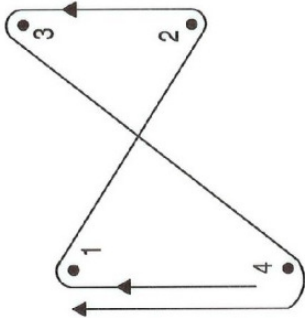
Second and subsequent even rounds



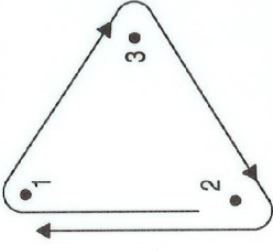
D



G

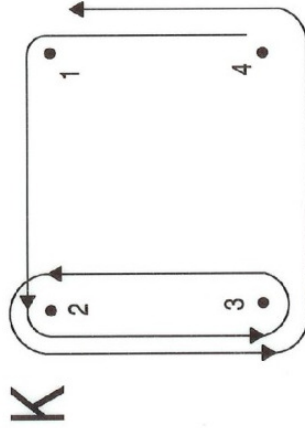


J

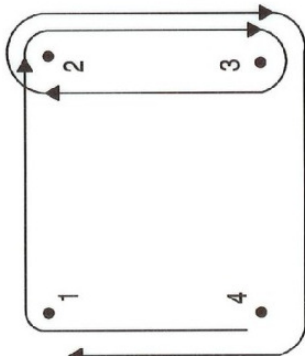


First and subsequent odd rounds

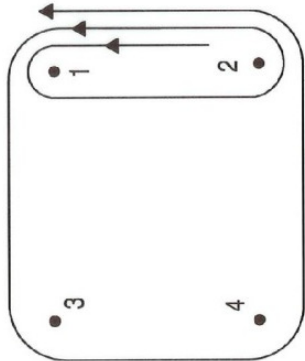
Second and subsequent even rounds



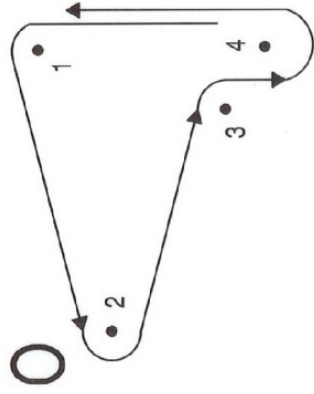
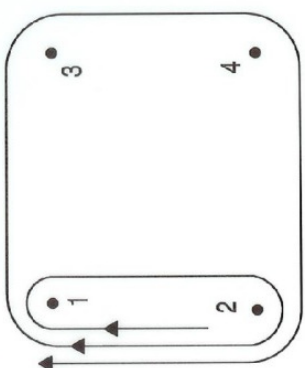
L



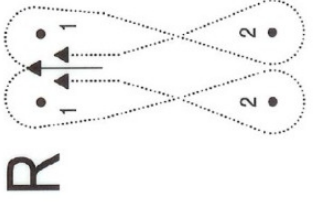
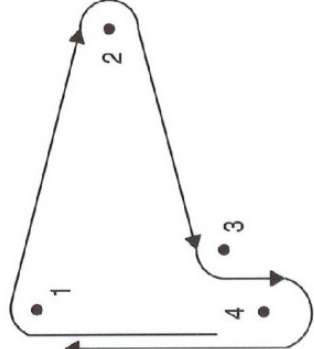
M



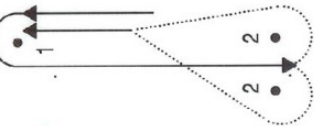
N



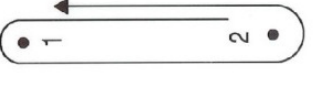
P



S



T



V

