



Changes to Hayling Bay Racing Marks Spring 2011

Effective 07th April 2011

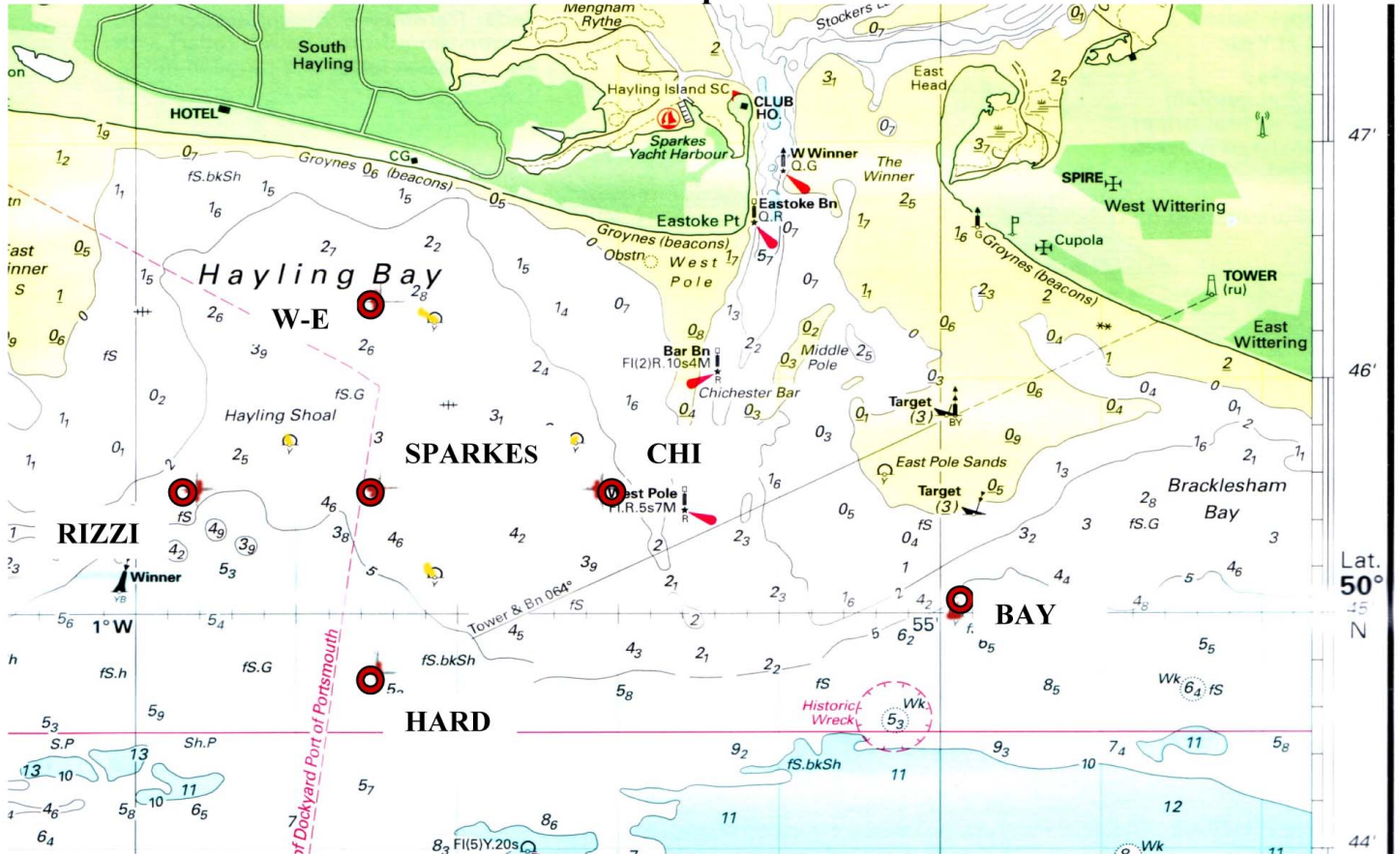


Chart for identification purposes only – accuracy is not guaranteed

	Previous Position		New Position 2011	
W-E (was BAY)	50 46 23 N	00 58 14 W	50 46 33 N	00 58 50 W
CHI*	50 45 73 N	00 57 27 W	50 45 52 N	00 57 06W
HARD*	50 45 16 N	00 58 15 W	50 44 73 N	00 58 50 W
RIZZI* (was W-E)	50 45 73 N	00 59 05 W	50 45 52 N	00 59 61 W
‘BAY’ (Bracklesham side)	-	-	50 45 00 N	00 54 90 W
‘SPARKES’ * interim ‘Middle’	-	-	50 45 52 N	00 58 50 W

* indicates new style mark (similar to CHI laid in 2010) & lit

N.B SPARKES will not be in position until the beginning of May, pending delivery from suppliers, but an unlit pillar buoy named ‘MIDDLE’ will be sited in the interim.